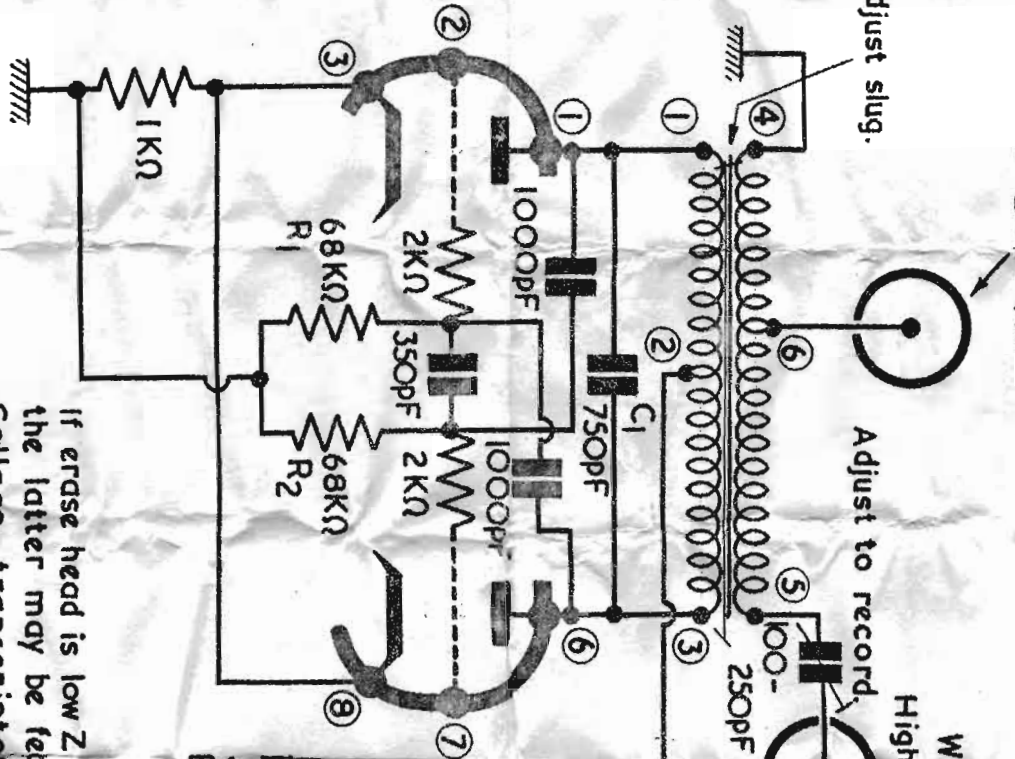
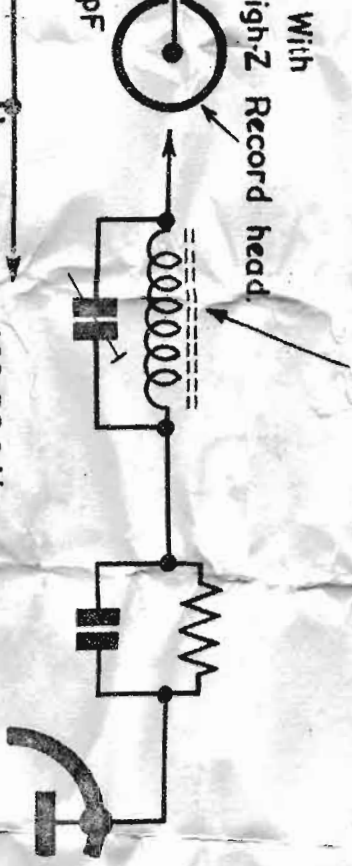


With Low-Z Erase Head.

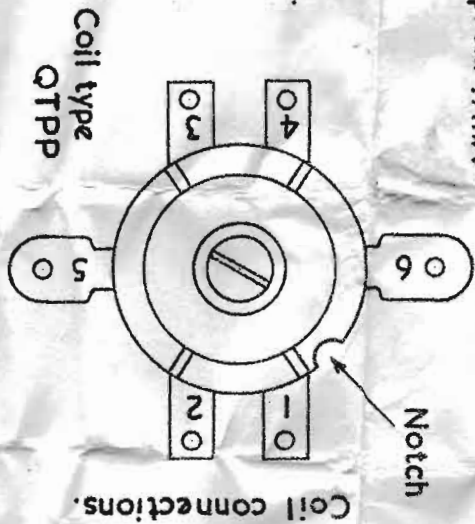


Tune slug for bias rejection. Coil type QT6

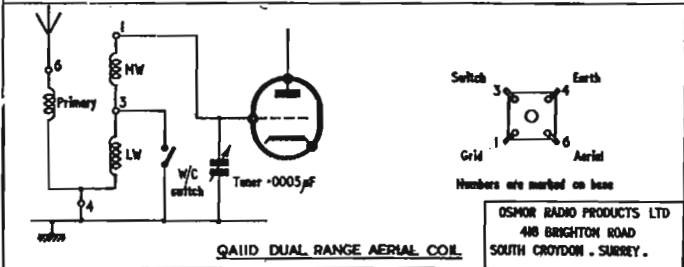
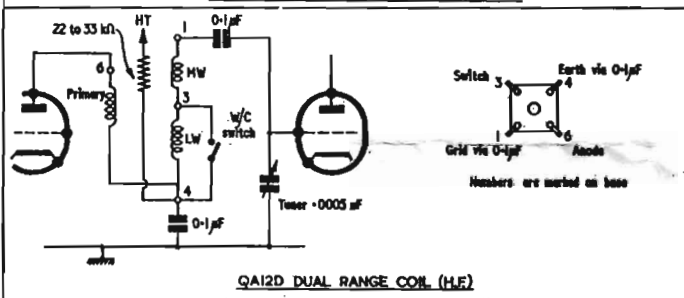
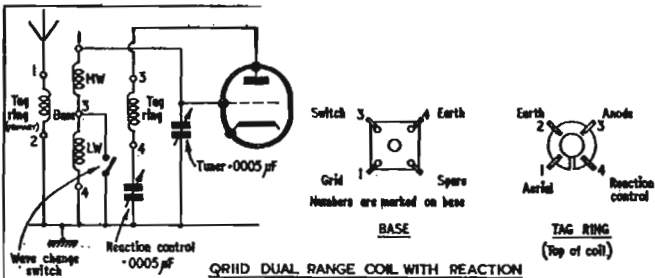


Connection 6 Not normally used.

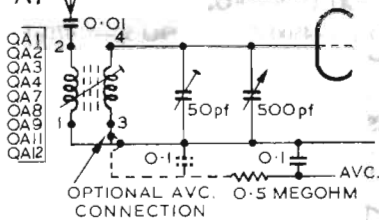
2BH7 Heater connections. Join pins 4 and 5 Earth pin 9



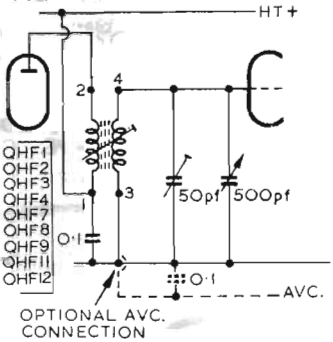
If erase head is low Z and record head high Z, the latter may be fed from one anode (e.g. Collaro transistor).
 All resistors 1/2 watt
 All capacitors MICA
 Top View (When fixed)



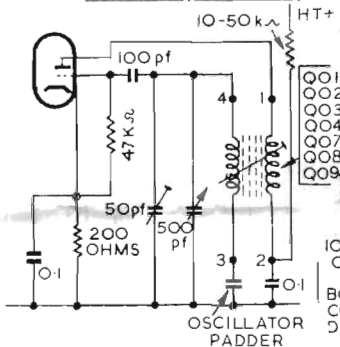
A1 APERIODIC AERIAL COUPLING



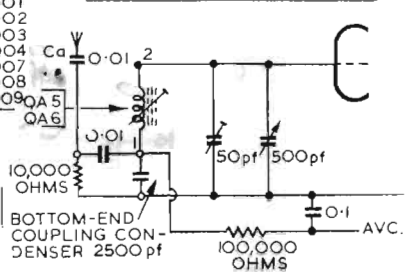
A2 APERIODIC H.F. COUPLING



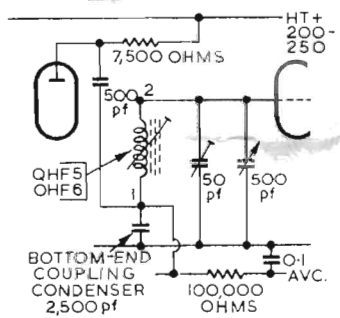
A3 APERIODIC OSCILLATOR COUPLING (TUNED GRID)



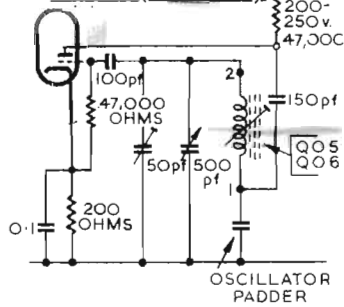
B1 BOTTOM-END AERIAL COUPLING



B2 BOTTOM-END H.F. COUPLING



B3 BOTTOM-END OSCILLATOR COUPLING (TUNED GRID)



QR11/12 connect as QA11/12. Reaction winding (tag ring) connect tag 4 to anode, tag 2 to chassis via reaction condenser. Circuit available.

Tag connections

**NOTE
FLAT
SIDE**



PADDERS FOR OSC. COILS

QO 1 — 4500pF	QO 5 — 470pF
QO 2 — 4500pF	QO 6 — 150pF
QO 3 — 4500pF	QO 7 — 2500pF
QO 4 — 2500pF	QO 8 — 470pF
	QO 9 — 150pF

SUB-MINIATURE 'Q' COILS

Colour Code:- Blue = \AA . Green = HF. Red = OSC.

Start 1 at the coloured spot and proceed clockwise. **FIXING $7/32''$ HOLE**

